



Developer & Architect

Specification Pack

Specify Once, Solve Forever





Executive Summary

Titan Turf supplies premium, Australian-made synthetic turf systems suitable for residential developments, schools, sports facilities, councils and public assets.

Titan Turf systems are designed to:

- Reduce whole-of-life asset cost
- Minimise maintenance and downtime
- Improve surface durability and performance
- Reduce heat build-up through integrated cooling technology
- Provide long-term certainty through extended manufacturer warranties

This specification pack is provided to support early-stage design, specification and procurement decisions.

2

Applications

Titan Turf is suitable for the following applications:

- Residential developments and landscaped common areas
- Schools and childcare facilities
- Tennis courts
- Basketball courts
- Cricket pitches and training surfaces
- Golf and multi-use sports areas
- Council and community assets
- Pet-friendly and high-traffic environments

Product selection shall be based on intended use, traffic loading and performance requirements.



3

PRODUCT RANGE OVERVIEW

The Titan premium Turf range includes

Titan Supreme 30

Titan Elite 40

Titan Silverback Coolplus 40

Titan Savanna 40

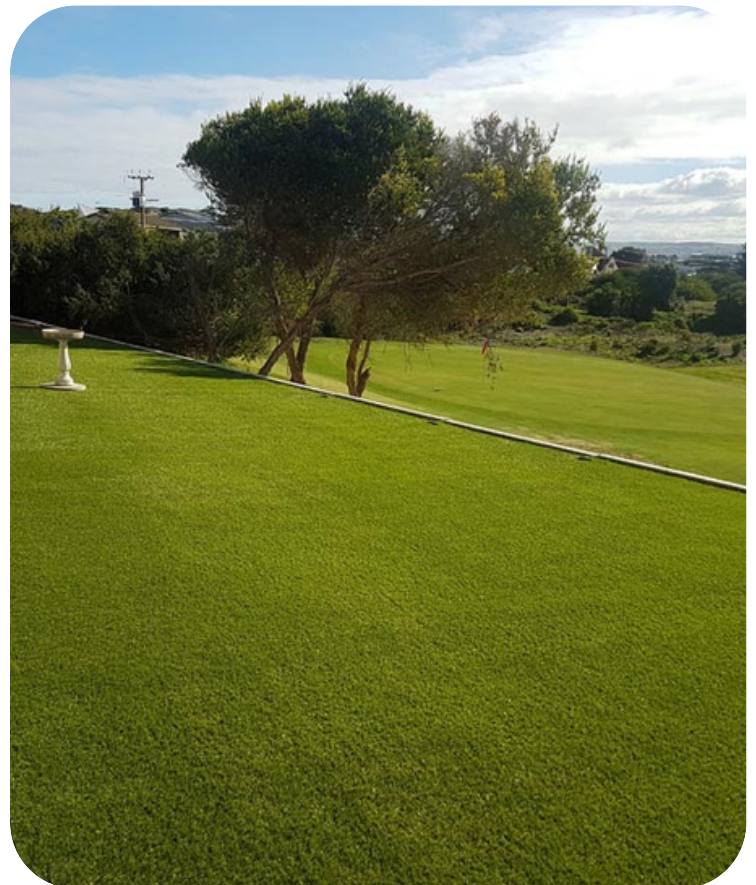
Titan Coolplay

These products incorporate:

- Superyarn™ fibre system for durability, no static, and sanitised
- Coolplus™ cooling technology to reflect infrared light and reduce surface heat
- UV-stabilised materials suitable for Australian conditions
- Long-term manufacturer warranties

Titan Turf also supplies

- Proplay in 23mm and 35mm
- Hedge Garden Edging



Product & Application Matrix

The Titan Turf Commercial Range is premium Australian made product selected for specific application for these commercial use cases.

Application	Titan Supreme 30	Titan Elite 40	Titan Silverback Coolplus 40	Titan Savanna 40	Titan Coolplay	Proplay 23mm and 35mm	Hedge Garden Edging
Residential Landscapes	✓	✓	✓	✓			✓
Schools	✓	✓	✓		✓	✓	✓
Childcare	✓	✓	✓		✓	✓	✓
Council & Commercial	✓	✓	✓		✓	✓	✓

For detailed specification sheets please refer to <https://titanurf.com.au/commercial/>

Due to the wide scope of potential applications final product selection and pricing is confirmed based on project requirements.



The Titan Turf Sport Range is Australian made premium artificial turf designed and manufactured for these specific sport use cases.

- Cricket
- Basketball
- Tennis
- Golf
- Multisport
- Field Sports

For detailed specification sheets please refer to

<https://titanturf.com.au/sports/>



5

TECHNICAL PERFORMANCE SUMMARY

Titan Turf provides the following performance characteristics:

- High resistance to fibre flattening and wear
- Integrated cooling technology to reduce surface heat
- Effective drainage through turf and base system
- Consistent appearance over warranted life
- Low ongoing maintenance requirements

Detailed technical data sheets are available for each product upon request.

6

INSTALLATION REQUIREMENTS

6.1 Installation

Installation shall be carried out in accordance with:

- Manufacturer's installation guidelines
- Project drawings and details
- Relevant Australian Standards

Installation shall include:

- Correct base preparation
- Adequate drainage provision
- Secure joining, seaming and edging
- Stable interfaces with adjacent surfaces



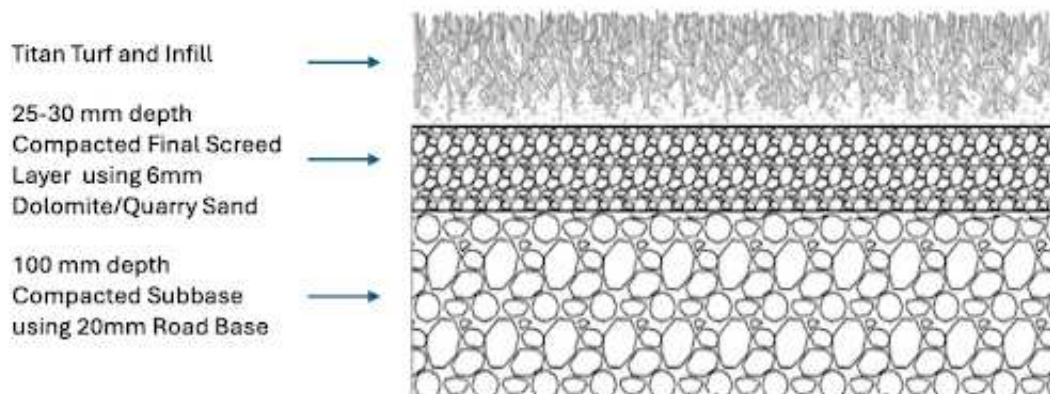
6.2 Base Preparation

The substrate shall be:

- Even, stable and well compacted to 100mm Depth
- Free draining
- Suitable for long-term support of the turf system

Concrete interfaces, edges and transitions shall be detailed to prevent water ingress, movement or premature failure.

Based on the application we can provide Cross Section diagrams on request.



6.3 Quality Control

The installer shall:

- Be experienced in the installation of premium synthetic turf systems
- Follow all manufacturer requirements
- Rectify defects prior to practical completion

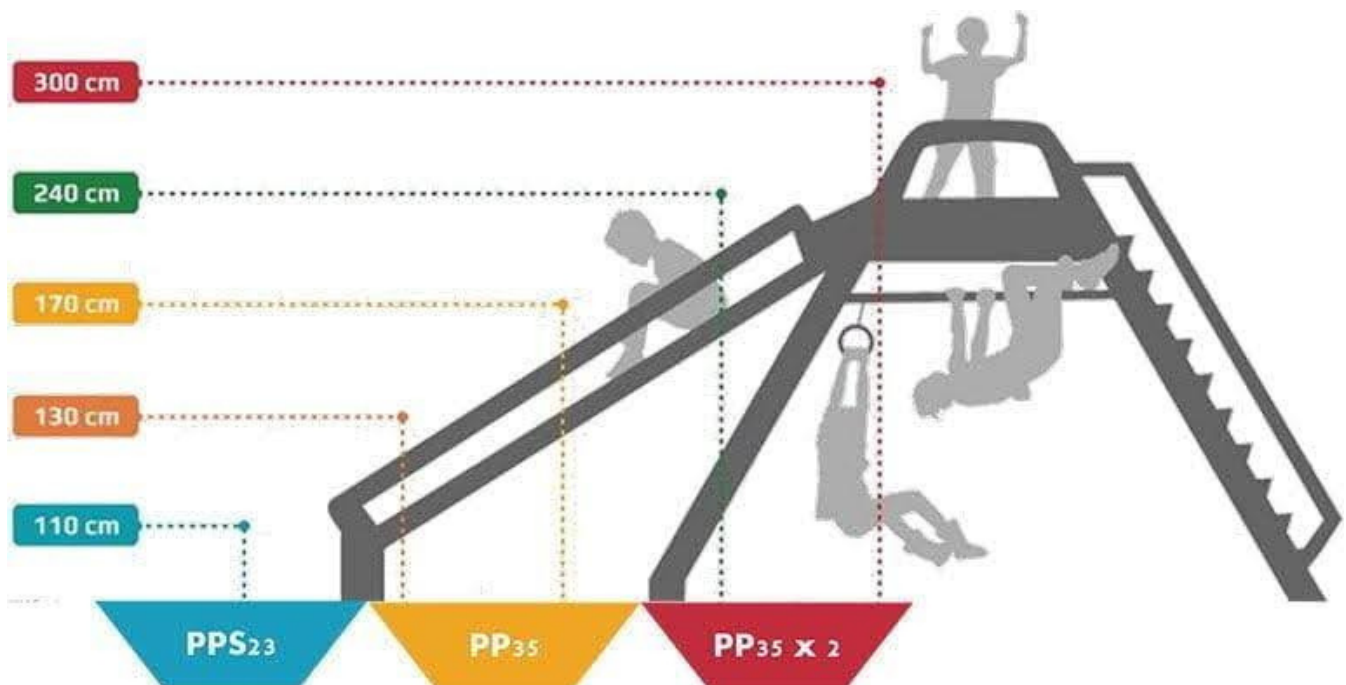
COMPLIANCE & STANDARDS

Titan Turf is suitable for use in:

- Educational environments
- Public and community facilities
- Sports and recreational applications

Titan Turf is designed to support:

- Reduced water usage
- Reduced maintenance intervention
- Long-term asset management outcomes
- Critical fall heights and playground surfacing to AS 4422:2016



LIFECYCLE COST CONSIDERATIONS

When assessed over a 20-year asset life:

- Natural turf typically has the lowest upfront cost but the highest whole-of-life cost due to water, maintenance and replacement.
- Budget synthetic turf reduces water use but often requires earlier replacement and higher maintenance intervention.
- Titan Turf delivers the lowest whole-of-life cost, with minimal downtime, reduced maintenance and extended warranty coverage.

Lifecycle cost comparisons consider maintenance, water, repairs, resurfacing and asset downtime.

LIFECYCLE COST COMPARISON

Natural Turf vs Budget Synthetic vs Titan Turf
(20-Year Asset Life)

Assumptions

- Area: 1,000 m² (scales linearly)
- Use: High-traffic (schools, sport, public / shared use)
- Timeframe: 20 years
- Costs indicative only (excludes GST)
- Based on Australian conditions and typical council / commercial maintenance regimes

Cost Category	Natural Turf	Budget Synthetic Turf	Titan Turf (Premium)
Initial Supply & Install	Low–Medium	Medium	Medium–High
Water (20 yrs)	High	Nil	Nil
Mowing / Grooming	High (ongoing)	Medium	Low
Fertiliser / Chemicals	High	Nil	Nil
Repairs / Patching	Medium–High	High	Low
Heat Management		Poor	Integrated cooling
Surface Flattening		High risk	Low risk (Superyarn)
Resurfacing / Replacement	Turf replacement multiple times	Likely replacement at 8–10 yrs	No replacement within 20 yrs
Downtime / Closures	Frequent	Occasional	Minimal
Warranty Coverage	None	Limited (5–8 yrs)	15–20 yrs
Indicative 20–Year Cost	Highest	Medium–High	Lowest (whole-of-life)

9

WARRANTY

Titan Turf systems are supported by manufacturer warranties of 15–20 years, depending on product selection.

Warranty coverage includes:

- Fibre degradation
- UV stability
- Manufacturing defects

Warranty is provided by the manufacturer and is not solely reliant on the installer.

10

SPECIFICATION CLAUSES



10.1 Short-Form Clause

Synthetic Turf:

Provide Australian-made synthetic turf supplied by *Titan Turf*, incorporating **Coolplus™ cooling technology** and **Superyarn™ fibre system**, suitable for the nominated application.

Product to be **Titan Elite, Titan Silverback** or **Titan Supreme** (or approved equivalent), with a **minimum 15-year manufacturer's warranty**.

Installation to be carried out in accordance with the manufacturer's specifications and relevant Australian Standards.



10.2 Long-Form Clause

Product Description:

Provide **premium, Australian-made synthetic turf** manufactured and supplied by TitanTurf designed for long-term use in residential/ school/ sport/ council and commercial applications.

The synthetic turf shall incorporate:

- **Cooling technology** to reduce surface heat build-up
- **High-durability yarn system** designed to resist flattening and fibre degradation
- **UV-stabilised materials** suitable for Australian conditions
- Proven performance across high-traffic environments

Approved Products:

Approved products include:

- Titan Supreme 30
- Titan Elite 40
- Titan Silverback Coolplus 40
- Titan Coolplay
- Titan Savanna 40

Selection shall be based on the intended application.

10.3 Substitutions

No substitutions shall be permitted without submission of full technical documentation demonstrating equivalence or superiority in performance, durability, cooling capability, warranty period, and Australian



CASE STUDIES

Titan Turf has been successfully installed across many sites in recent months:

- **Sports clubs ie Tennis/Cricket/Soccer/Bowling**
 - Munno Para Sports Ground for soccer field and cricket nets
- **Schools and childcare facilities**
 - Australian Islamic College for soccer field and childcare area
 - St Aloysius College
 - Sunrise Early Learning Centre
 - Pinnacle College
 - Nazareth College
- **Council and community assets**
 - Morphettville Race Course
 - Glenelg Council – Glenelg oval cricket training
 - Onkaparinga Council – Reynella cricket training

Detailed case studies and references are available upon request.

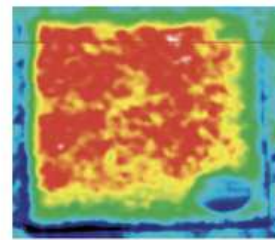
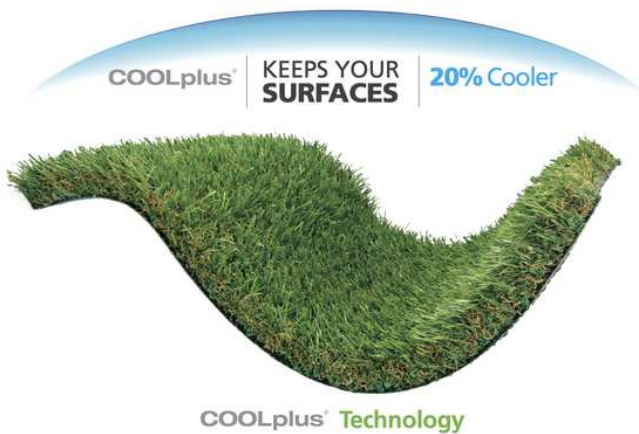
PROCUREMENT & DESIGN ASSIST

Titan Turf offers:

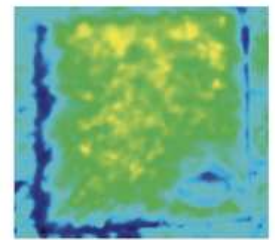
- Early design assistance
- Product selection support
- Specification guidance
- Budget and feasibility input

Early engagement is recommended to ensure correct specification and optimal outcomes.

COOLplus Technology to keep surfaces cooler



Other synthetic grass



SYNLawn with COOLplus®

Images shown demonstrate the difference in surface temperature when COOLplus Technology is used vs when it is not. Left image is artificial grass without COOLplus Technology. Right image is artificial grass with COOLplus Technology.

Thermal images of artificial grass captured with Fluke T120 Thermal Imager. Images are captured with calibrated temperature data in a matrix of over 12,000 discrete measurements per thermal image.

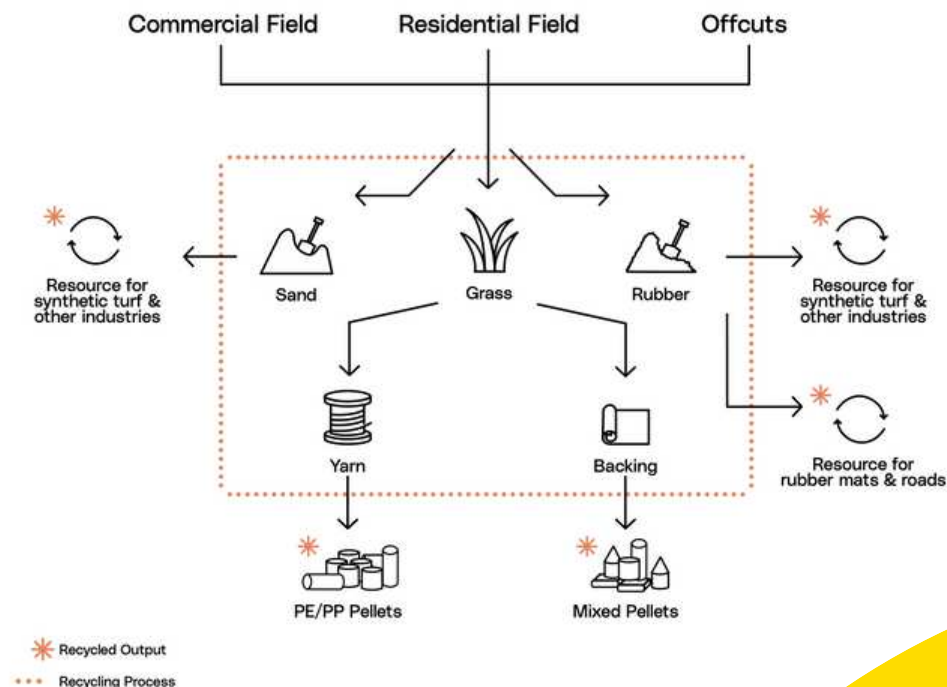
Australia's COOLEST artificial grass

Scientifically proven, SYNLawn's proprietary COOLplus Technology reflects sunlight, thus reducing heat build-up and emissivity. Sunlight is comprised of a wide spectrum of radiation including visible light, UV radiation and infrared. Infrared radiation causes molecular vibration, which translates into heat energy when it is absorbed by an object. Our COOLplus Technology does not absorb infrared rays, resulting in less molecular vibration and cooler surface temperatures. Studies show surface temperatures of artificial grass with COOLplus Technology are consistently 10–20% lower than artificial grasses without it. Other added benefits of our COOLplus Technology is that it reduces the typical glossy sheen of artificial grass fibres, and is softer to touch and less abrasive than other artificial grasses.

Sustainability and the environment

Our turf is made from polyethylene fibres, which require a lower consumption of resources and offer significantly better recyclability compared to other polymers. In addition, polyethylene does not contain any plasticisers, and even when it is incinerated, no harmful substances are released.

Titan turf has an industry leading average life span of over 12 years which minimises environmental impact and we support RE4ORM as Australia's first synthetic turf recovery and recycling facility, with the capability of separating, recovering and recycling the core components of synthetic turf for reuse. RE4ORM aims to reduce virgin material consumption, carbon emissions and pollution within the synthetic turf industry.





CONTACT DETAILS

For design assistance, specification support or further technical information, contact:

Titan Turf

Website: www.titanturf.com.au

Email: info@titanturf.com.au

Phone: 8384 8604